

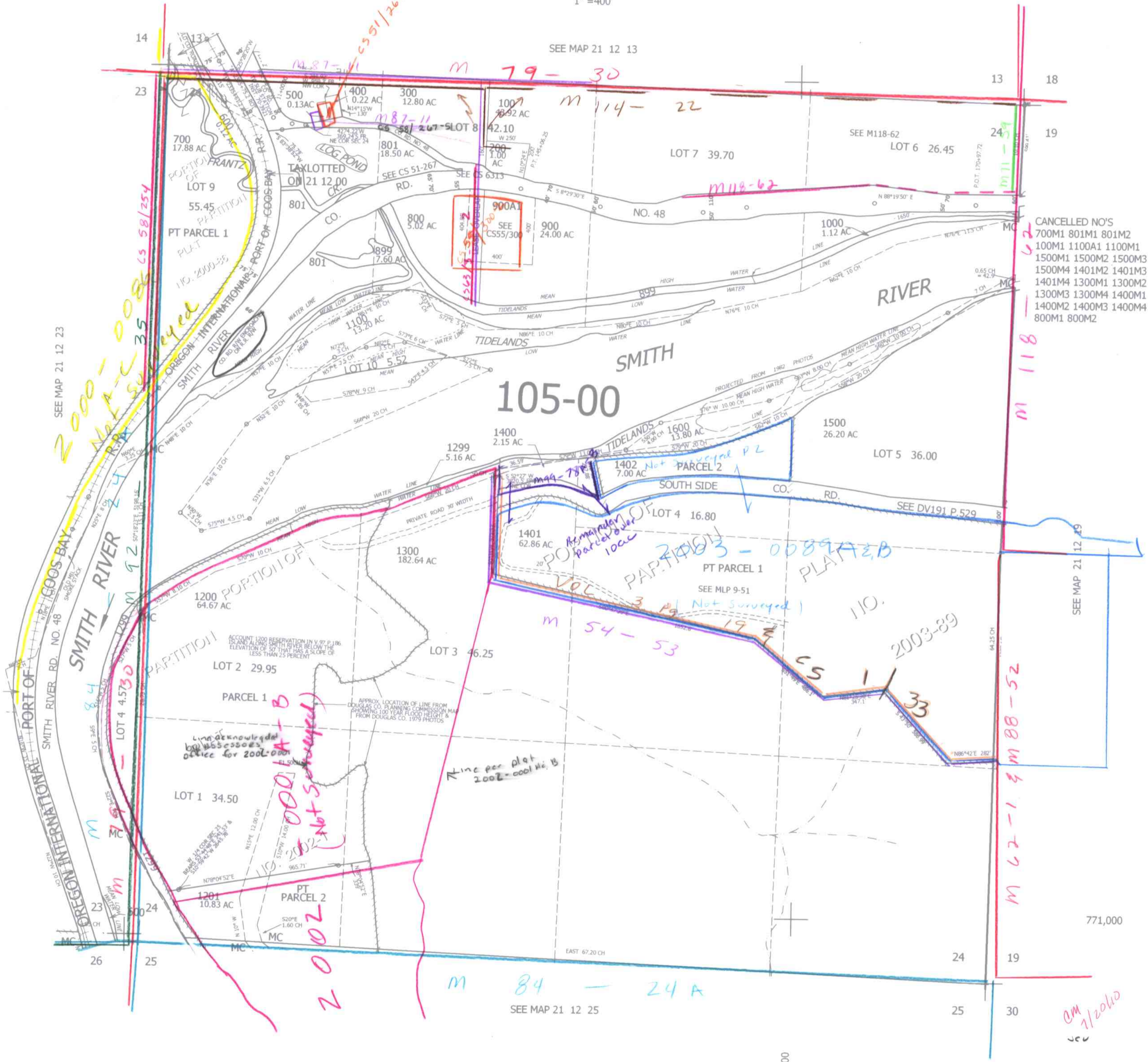
THIS MAP WAS PREPARED FOR ASSESSMENT PURPOSE ONLY.

SEC.24 T.21S. R.12W. W.M.  
DOUGLAS COUNTY

REVISED ON  
12-14-10

21 12 24

1" = 400'



CANCELLED NO'S  
 700M1 801M1 801M2  
 100M1 1100A1 1100M1  
 1500M1 1500M2 1500M3  
 1500M4 1401M2 1401M3  
 1401M4 1300M1 1300M2  
 1300M3 1300M4 1400M1  
 1400M2 1400M3 1400M4  
 800M1 800M2

SEE MAP 21 12 29

771,000

AM 1/2010

21 12 24

3,978,000

SEE MAP 21 12 25

SEE MAP 21 12 23

SEE MAP 21 12 13

2000-0086 CS 58/254  
 2000-0086 CS 58/254  
 2000-0086 CS 58/254  
 2000-0086 CS 58/254

2000-0086 CS 58/254  
 2000-0086 CS 58/254  
 2000-0086 CS 58/254  
 2000-0086 CS 58/254

Line per plat 2002-0001 No. B

Line acknowledged by assessors office for 2002-0001

ACCOUNT 1200 RESERVATION IN V. 97 P. 186  
 IS AN ALONG SMITH RIVER BELOW THE  
 ELEVATION OF 50' THAT HAS A SLOPE OF  
 LESS THAN 25 PERCENT

APPROX. LOCATION OF LINE FROM  
 DOUGLAS CO. PLANNING COMMISSION MAP  
 SHOWING 100 YEAR FLOOD HEIGHT &  
 FROM DOUGLAS CO. 1979 PHOTOS

1299 5.16 AC

1400 2.15 AC

1600 13.80 AC

1500 26.20 AC

1402 7.00 AC

1401 62.86 AC

1300 182.64 AC

1200 64.67 AC

1299 5.16 AC

1400 2.15 AC

1600 13.80 AC

1500 26.20 AC

1402 7.00 AC

1401 62.86 AC

1300 182.64 AC

1200 64.67 AC

1299 5.16 AC

1400 2.15 AC

1600 13.80 AC

1500 26.20 AC

1402 7.00 AC

1401 62.86 AC

1300 182.64 AC

1200 64.67 AC

1299 5.16 AC

1400 2.15 AC

1600 13.80 AC

1500 26.20 AC

1402 7.00 AC

1401 62.86 AC

1300 182.64 AC

1200 64.67 AC

1299 5.16 AC

1400 2.15 AC

1600 13.80 AC

1500 26.20 AC

1402 7.00 AC

1401 62.86 AC

1300 182.64 AC

1200 64.67 AC

1299 5.16 AC

1400 2.15 AC

1600 13.80 AC

1500 26.20 AC

1402 7.00 AC

1401 62.86 AC

1300 182.64 AC

1200 64.67 AC

1299 5.16 AC

1400 2.15 AC

1600 13.80 AC

1500 26.20 AC

1402 7.00 AC

1401 62.86 AC

1300 182.64 AC

1200 64.67 AC

1299 5.16 AC

1400 2.15 AC

1600 13.80 AC

1500 26.20 AC

1402 7.00 AC

1401 62.86 AC

1300 182.64 AC

1200 64.67 AC

1299 5.16 AC

1400 2.15 AC

1600 13.80 AC

1500 26.20 AC

1402 7.00 AC

1401 62.86 AC

1300 182.64 AC

1200 64.67 AC

1299 5.16 AC

1400 2.15 AC

1600 13.80 AC

1500 26.20 AC

1402 7.00 AC

1401 62.86 AC

1300 182.64 AC

1200 64.67 AC

1299 5.16 AC

1400 2.15 AC

1600 13.80 AC

1500 26.20 AC

1402 7.00 AC

1401 62.86 AC

1300 182.64 AC

1200 64.67 AC

1299 5.16 AC

1400 2.15 AC

1600 13.80 AC

1500 26.20 AC

1402 7.00 AC

1401 62.86 AC

1300 182.64 AC

1200 64.67 AC

1299 5.16 AC

1400 2.15 AC

1600 13.80 AC

1500 26.20 AC

1402 7.00 AC

1401 62.86 AC

1300 182.64 AC

1200 64.67 AC

1299 5.16 AC

1400 2.15 AC

1600 13.80 AC

1500 26.20 AC

1402 7.00 AC

1401 62.86 AC

1300 182.64 AC

1200 64.67 AC

1299 5.16 AC

1400 2.15 AC

1600 13.80 AC

1500 26.20 AC

1402 7.00 AC

1401 62.86 AC

1300 182.64 AC

1200 64.67 AC

1299 5.16 AC

1400 2.15 AC

1600 13.80 AC

1500 26.20 AC

1402 7.00 AC

1401 62.86 AC

1300 182.64 AC

1200 64.67 AC

1299 5.16 AC

1400 2.15 AC

1600 13.80 AC

1500 26.20 AC

1402 7.00 AC

1401 62.86 AC

1300 182.64 AC

1200 64.67 AC

1299 5.16 AC

1400 2.15 AC

1600 13.80 AC

1500 26.20 AC

1402 7.00 AC

1401 62.86 AC

1300 182.64 AC

1200 64.67 AC

1299 5.16 AC

1400 2.15 AC

1600 13.80 AC

1500 26.20 AC

1402 7.00 AC

1401 62.86 AC

1300 182.64 AC

1200 64.67 AC

1299 5.16 AC

1400 2.15 AC

1600 13.80 AC

1500 26.20 AC

1402 7.00 AC

1401 62.86 AC

1300 182.64 AC

1200 64.67 AC

1299 5.16 AC

1400 2.15 AC

1600 13.80 AC

1500 26.20 AC

1402 7.00 AC

1401 62.86 AC

1300 182.64 AC

1200 64.67 AC

1299 5.16 AC

1400 2.15 AC

1600 13.80 AC

1500 26.20 AC

1402 7.00 AC

1401 62.86 AC

1300 182.64 AC

1200 64.67 AC

1299 5.16 AC

1400 2.15 AC

1600 13.80 AC

1500 26.20 AC

1402 7.00 AC

1401 62.86 AC

1300 182.64 AC

1200 64.67 AC

1299 5.16 AC

1400 2.15 AC

1600 13.80 AC

1500 26.20 AC

1402 7.00 AC

1401 62.86 AC

1300 182.64 AC

1200 64.67 AC

1299 5.16 AC

1400 2.15 AC

1600 13.80 AC

1500 26.20 AC

1402 7.00 AC

1401 62.86 AC

1300 182.64 AC

1200 64.67 AC

1299 5.16 AC

1400 2.15 AC

1600 13.80 AC

1500 26.20 AC

1402 7.00 AC

1401 62.86 AC

1300 182.64 AC

1200 64.67 AC

1299 5.16 AC

1400 2.15 AC

1600 13.80 AC

1500 26.20 AC

1402 7.00 AC

1401 62.86 AC

1300 182.64 AC

1200 64.67 AC

1299 5.16 AC

1400 2.15 AC

1600 13.80 AC

1500 26.20 AC

1402 7.00 AC

1401 62.86 AC

1300 182.64 AC

1200 64.67 AC

1299 5.16 AC

1400 2.15 AC

1600 13.80 AC

1500 26.20 AC

1402 7.00 AC

1401 62.86 AC

1300 182.64 AC

</