

THIS MAP WAS PREPARED FOR ASSESSMENT PURPOSE ONLY.

SW1/4 SE1/4 SEC.22 T.21S. R.12W. W.M.  
DOUGLAS COUNTY  
1"=100'

21 12 22DC

REVISED ON  
7-31-17

1/16  
COR

SW COR  
LOT 8  
NW COR  
LOT 9

CANCELLED NO'S  
901 1001 6800  
1002 100M1 5500M1  
1501 1003 1502  
6100 2702 3401

SEE MAP 21 12 22

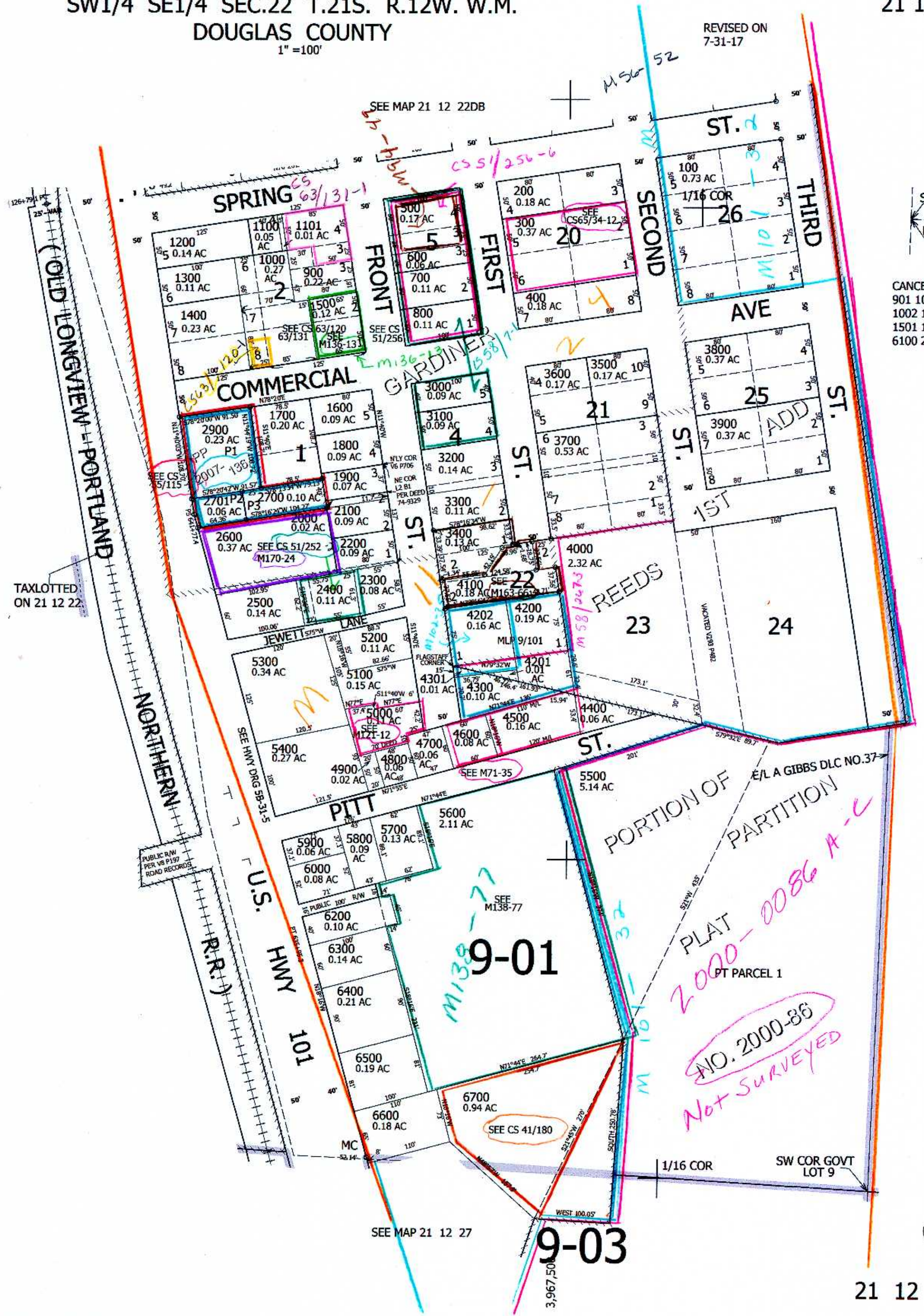
TAXLOTTED  
ON 21 12 22

SEE MAP 21 12 22

772,500

aw 8/25/17  
JCV

21 12 22DC



1/4  
COR

SEE MAP 21 12 27

9-03