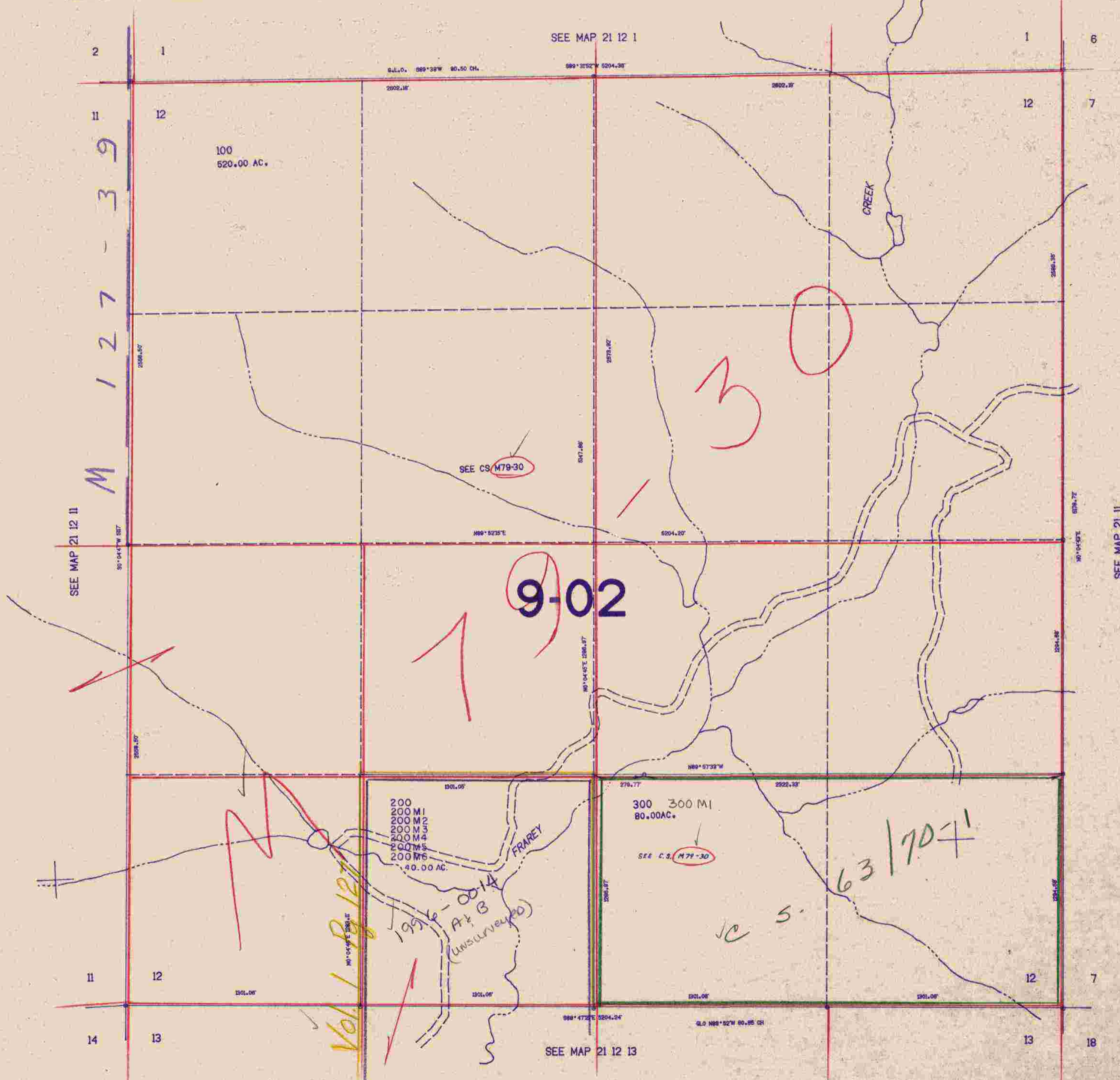


SECTION 12 T.21S. R.12W. W.M.
DOUGLAS COUNTY

21 12 12

THIS MAP WAS PREPARED FOR
ASSESSMENT PURPOSE ONLY.

1"=400'



SEE MAP 21 12 11

SEE MAP 21 12 1

SEE MAP 21 11

SEE MAP 21 12 13

782.000

1058.000

21 12 12

11/82
68