

NE1/4 SW1/4 SEC. 7 T.22S. R.12W. W.M.
DOUGLAS COUNTY

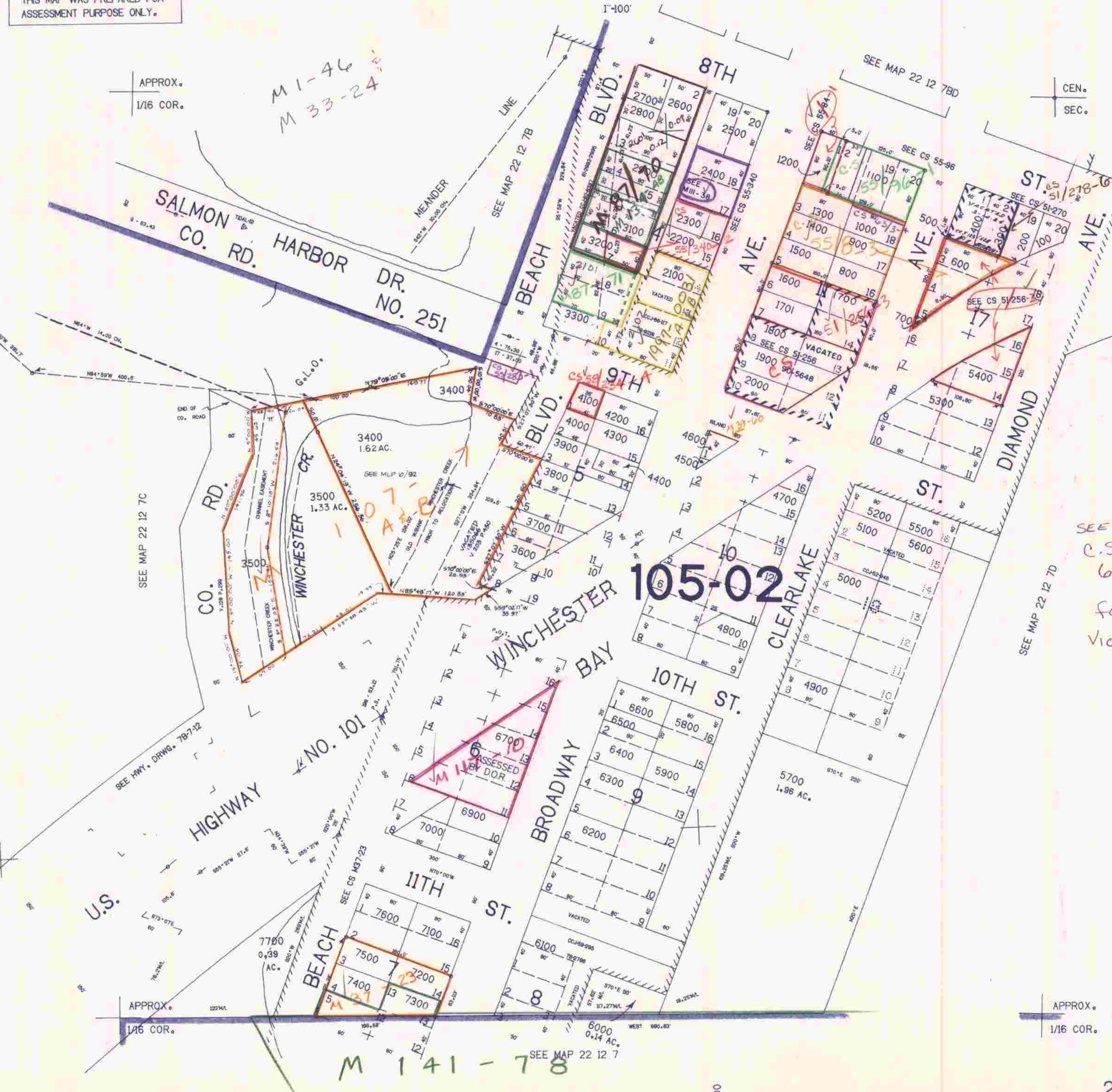
REVISED ON
3-10-93

22 12 7CA

THIS MAP WAS PREPARED FOR
ASSESSMENT PURPOSE ONLY.

APPROX.
1/16 COR.

CEN.
SEC.



CANCELLED NO'S
6800 3300 u 1
1101 3300 u 2
3301 3001
3000

SEE
C.S.
62/35-4
for 1947
Vicinity map

SEE MAP 22 12 7C

SEE MAP 22 12 7D

SEE HMY. DRWG. 78-7-12

752.500

APPROX.
1/16 COR.

APPROX.
1/16 COR.

M 141-78

SEE MAP 22 12 7

1028.000

22 12 7CA

7-93
je