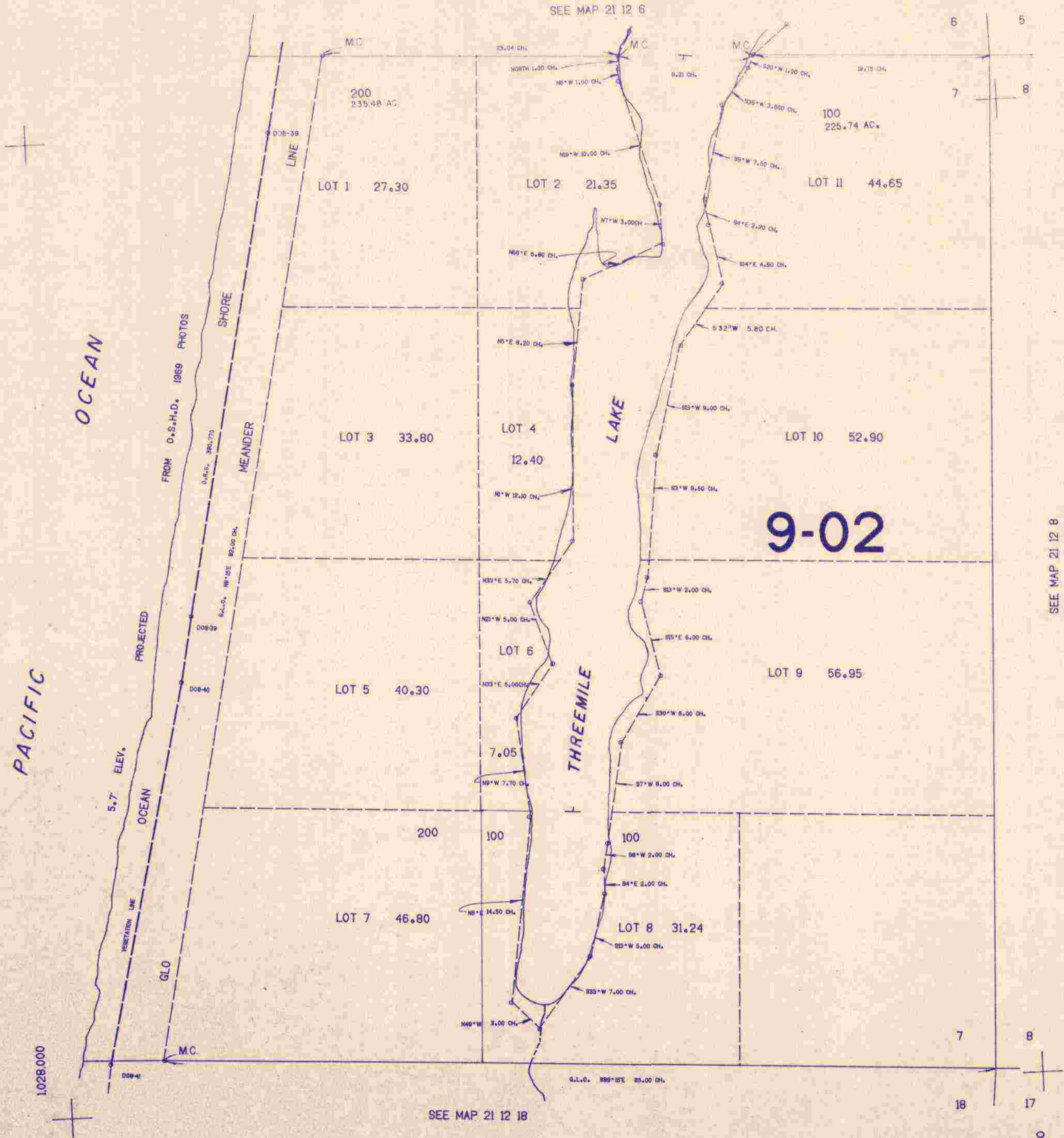


SECTION 7 T.21S. R.12W. W.M.  
DOUGLAS COUNTY

21 12 7

THIS MAP WAS PREPARED FOR  
ASSESSMENT PURPOSE ONLY.

1"=400'



9-02

SEE MAP 21 12 8

SEE MAP 21 12 18

21 12 7

11/82  
68