

SECTION 1 T.21S. R.12W. W.M.
DOUGLAS COUNTY

21 12 1

THIS MAP WAS PREPARED FOR
ASSESSMENT PURPOSE ONLY.

1"=400'

SEE MAP 20 12 36

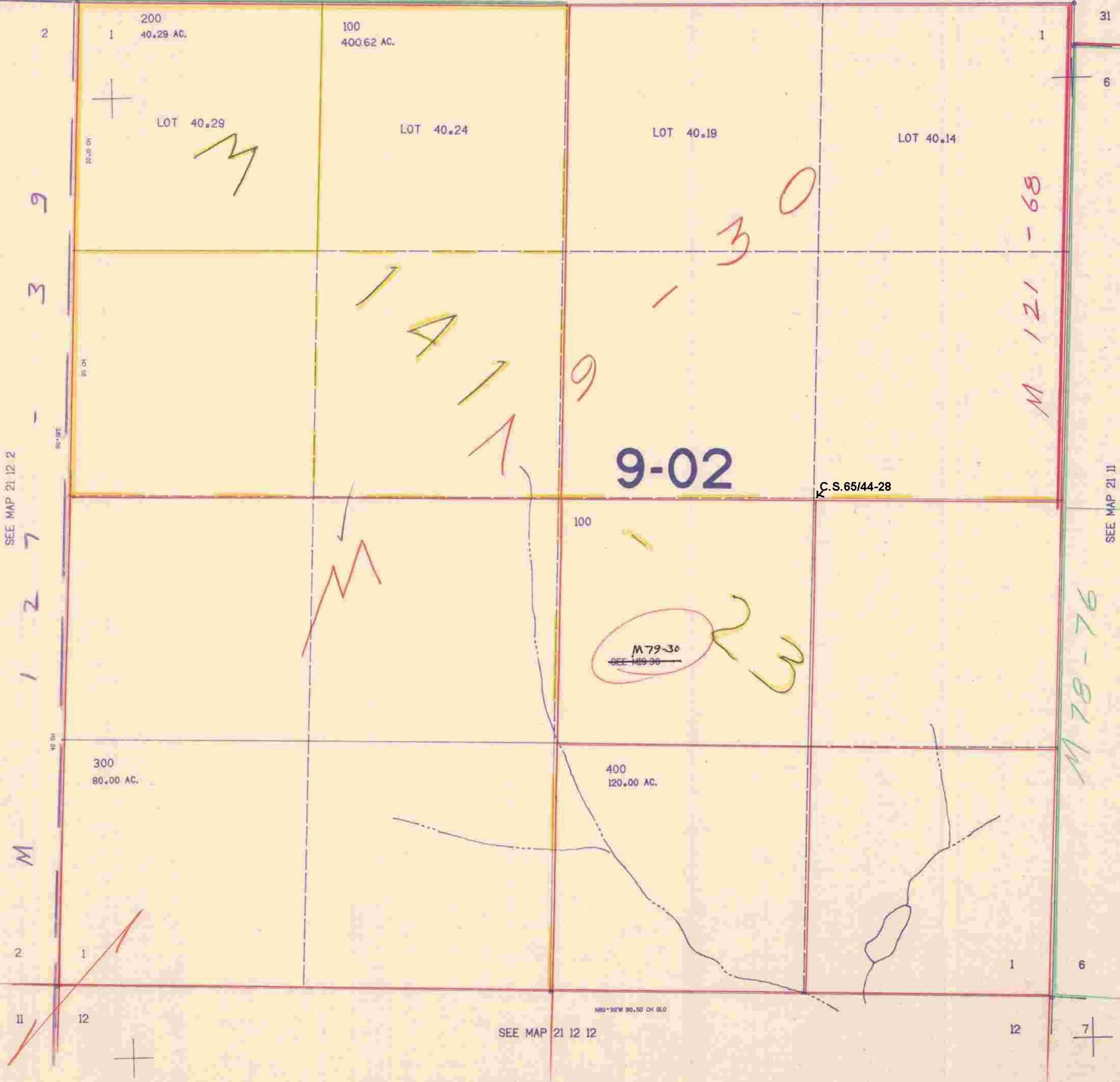
M 35

36

1 4 0 - 7

36

WEST 80 CH 6LD



1059.000

21 12 1

11/9/82
63