

DOUGLAS COUNTY DAMS AND YOU

Douglas County owns and operates two dams, located in the southern part of the county. One is Berry Creek Dam, located in the Ollala-Tenmile area.



This dam provides a recreational reservoir (Ben Irving) and water for domestic, fish habitat, irrigation, municipal and industrial uses.

The second dam is Galesville Dam, located on Upper Cow Creek near Azalea.



This dam provides flood control for the City of Glendale, a recreational reservoir (Galesville

Reservoir) and water for domestic, fish habitat, irrigation, municipal and industrial uses.

Galesville Dam also produces electricity by hydropower under a license issued by the Federal Energy Regulation Commission (FERC).

Both dams are managed by the Douglas County Public Works Department's Natural Resources Division (NRD) and monitored on a regular basis by NRD staff trained in dam safety.

Dam safety inspections of Berry Creek and Galesville Dams are conducted annually by the Oregon Water Resources Department (OWRD) Dam Safety Program's dam safety engineer and FERC Division of Dam Safety and Inspections' engineer, respectively.

ARE YOU AT RISK?

Each state has definitions and methods to determine the hazard potential of a dam. The hazard potential is defined as a situation which creates the potential for consequences such as loss of life, property damage or other adverse impacts.

These adverse impacts may occur in a defined area downstream or upstream of a dam if there is backwater flooding or landslide around the reservoir perimeter.

In Oregon, dams are regulated by the OWRD based on several factors including the height of the dam and the storage capacity of the reservoir.

Dams are assigned one of three classes based on the nature of their hazard potential:

Low Hazard dams include dams located where failure may damage uninhabited low value nonresidential buildings, agricultural land or low volume roads.

Significant Hazard dams include dams located where failure may damage highways or secondary railroads, cause interruption of use or service of public utilities, cause minor damage to isolated homes or minor damage to commercial and industrial buildings

High Hazard dams include dams located where failures will likely cause loss of life or serious damage to homes, industrial and commercial buildings, important public utilities, primary highways or major railroads.

Berry Creek Dam and Galesville Dam have been classified by OWRD as High Hazard Potential (HHP) dams.

It's important to know what risks are caused by the presence of a dam. It's equally important to know how to reduce those risks and understand how extreme rainfall events affect the risk of dam failure. To learn more, two e-booklets prepared by the Association of State Dam Safety Officials may be viewed online at www.livingneardams.org.

WHAT IS AN EMERGENCY ACTION PLAN?

An Emergency Action Plan (EAP) is a plan of action to reduce potential property damage and loss of lives in an area affected by dam failure.

A complete EAP includes a map of the potential inundation areas, procedures and information for warning downstream emergency management authorities and other crucial information. At their discretion, emergency managers may add directions at the dam, evacuation routes and the locations of shelters, emergency resources, businesses, schools, hospitals, nursing homes, residences and highways at risk.

WHY AN EAP?

EAPs save lives. They provide crucial written warning procedures that help emergency managers evacuate residences, schools, hospitals, nursing homes and recreation sites as needed.

EAPs are helpful to business owners. They may provide warning time for orderly shutdown and perhaps even to remove or secure some assets, data and equipment.

EAPs are required for HHP dam safety. Without an EAP those who live or happen to be in an inundation zone may not receive advance warning. Evacuation and response may be needlessly complicated or even compromised. Transportation, sheltering, food, water and other supplies may be delayed.

An EAP can protect you, your family, your job, your business, your peace of mind. Any time you're downstream from a dam you're at risk. Even when hiking, fishing, hunting, camping or motoring, an EAP can help get you to safety.

Douglas County has prepared an EAP for Berry Creek Dam and Galesville Dam. A copy of each

EAP is available for the public to review at the NRD office (see contact information below).

MAKE CONTACT

To learn more about Douglas County's dams, please contact:

Nathan R. Reed, P.E., CWRE
Hydrologist / Hydroelectric Plant Manager
Natural Resources Division
Douglas County Public Works
541-440-4344
nrreed@co.douglas.or.us

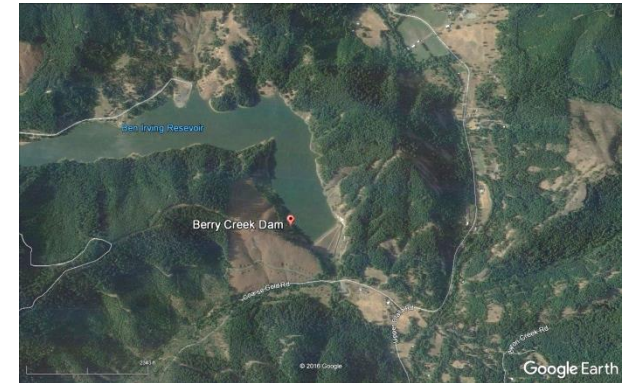
Wayne Stinson
Emergency Manager
Douglas County Emergency Management
Douglas County Sheriff's Office
541-440-4448
wastinso@co.douglas.or.us

Keith Mills, P.E.
Dam Safety Engineer
Oregon Dam Safety Program
Oregon Water Resources Department
503-986-0879
keith.a.mills@state.or.us

ADDITIONAL INFORMATION

You may also use Geographic Information Systems (GIS) software such as Douglas County's online GIS at <http://atlas1.co.douglas.or.us/pubgis> or Google Earth to get a bird's eye view of the terrain in the area of a dam. Using the map's zoom tool you can zoom in on the satellite image of the dam and its reservoir, which may provide a better visual understanding of the terrain

downstream of the dam as shown below for Berry Creek Dam.



Another helpful tool for determining natural hazards that exist in Douglas County is the county's Emergency Management website: www.dcsocounty.com/emergency_management_N.asp. The Emergency Management web page has related links along the right-hand column. If you select "Information About Natural Hazards in Oregon, Including Douglas County," the Oregon Risk MAP will open where you can access information for a specific Oregon county by clicking the "County Profiles" link at the top of the web page.

Douglas County's Citizen Emergency Notification System (CENS) is used to notify the public with important information during an emergency. With CENS, critical information can be relayed about natural disasters or other emergencies. Landline phone numbers are all automatically enrolled in CENS and will receive alerts based on their home address. For people who only have cellular phones, VoIP phones or those who want to register additional phones, you will need to register your phone at: http://www.dcsocounty.com/dccens/dccens_main.asp.